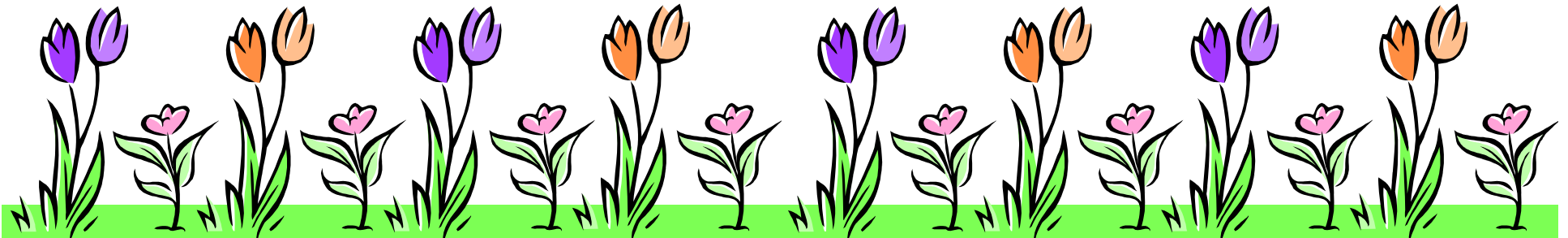




FORMULATION OF HYPOTHESIS

N S VISWANATH



2. → Sun rises in the East.

→ Moon rises in the West.

→ Magnetic Needle faces North.

→ Five basic elements are required for living:

a. Air

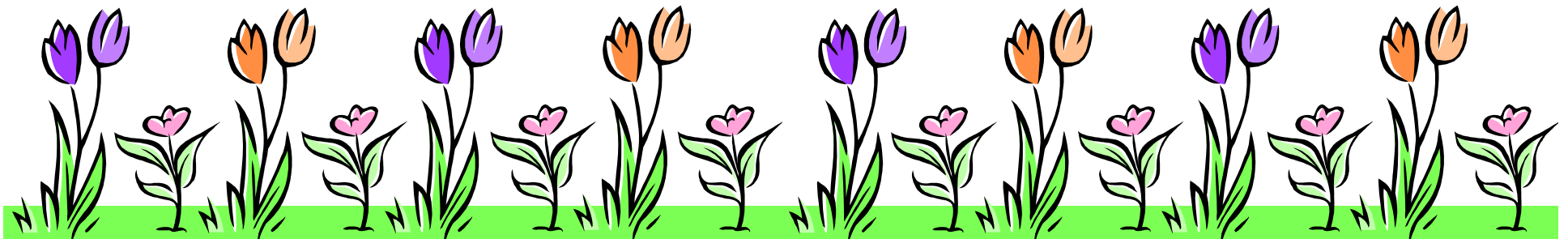
b. Water

c. Fire

d. Sun

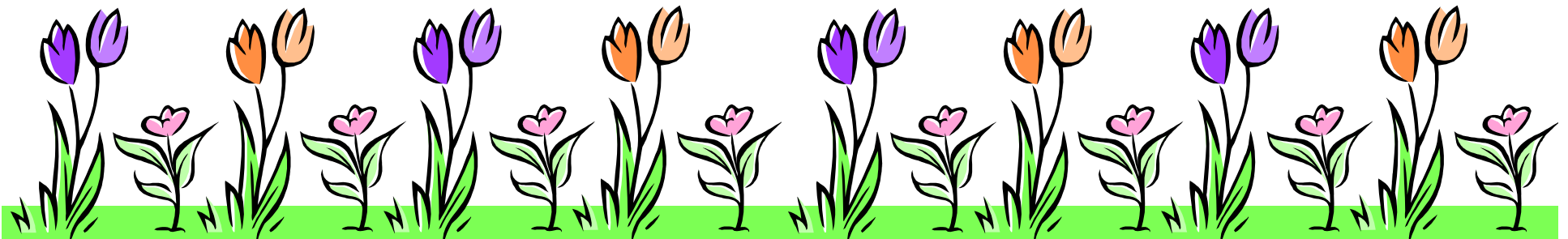
e. Earth

→ Inner happiness is all enduring.



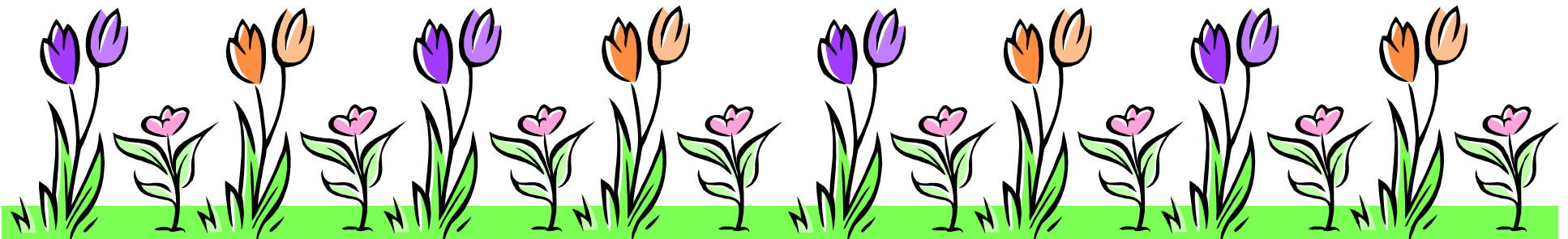


3. Natural Laws cannot be changed; from
Nature. Social Laws require to be changed;
evolved in a context.



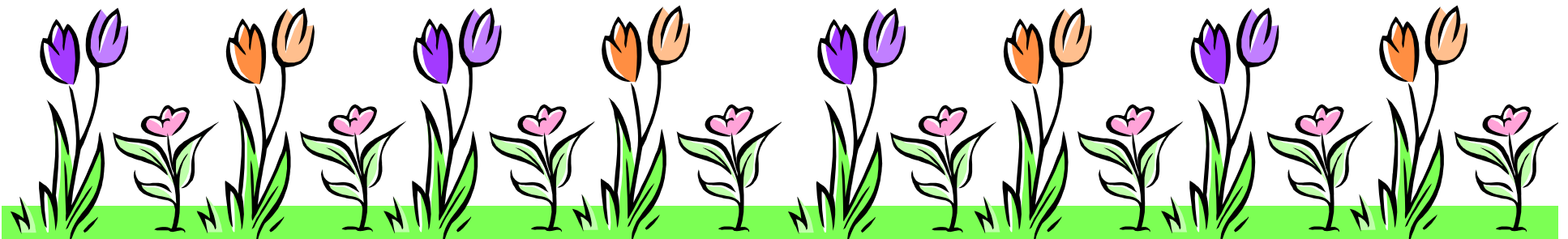


4. Uncertainty in any sphere needs an examination. Statements are made which include uncertainty.





5. Leadership influences change.



6. a. What type of Leadership?



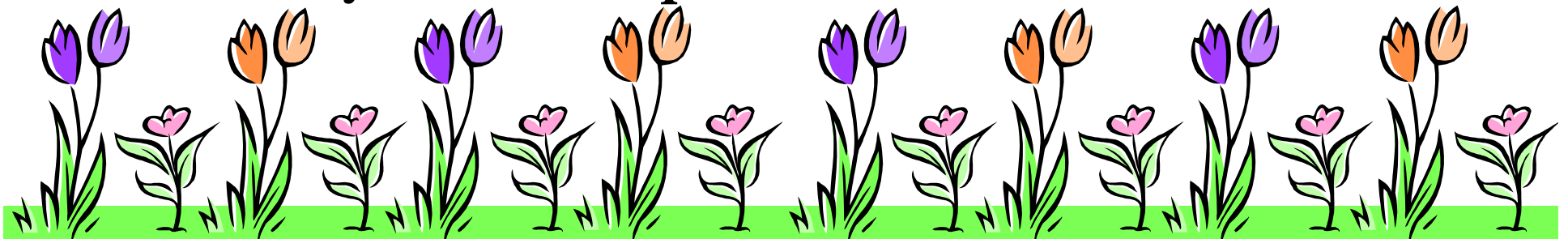
b. Where such Leadership?

c. When it existed?

d. What for it emerged?

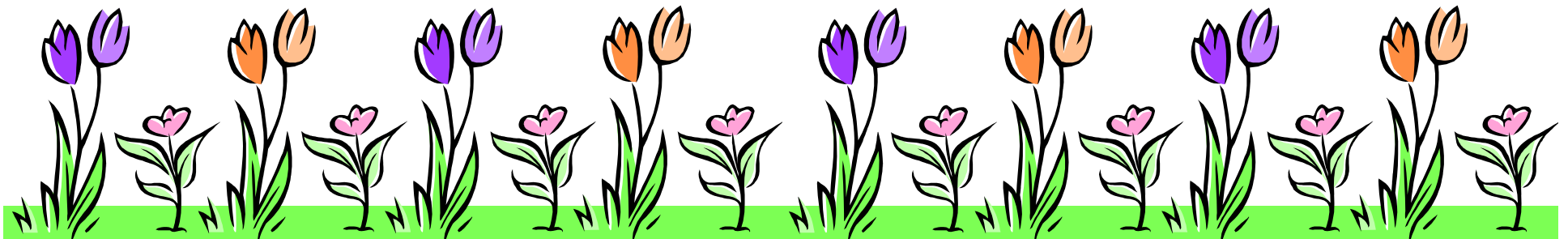
e. How Leadership can bring in change?

f. Why Leadership?



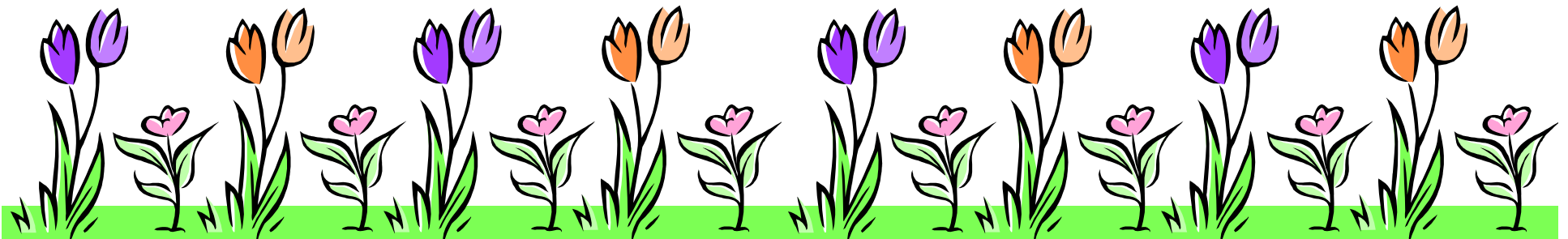


7. a. Type – Status quo, change, transformation, reformatory, revolutionary, dictatorship, command, transparent, opaque, stable / unstable, regulatory.....
- b. Which place? In what context?
- c. At what time?
- d. Back drop? Reasons influencing such type?
- e. The process? The Institution? The people?
- f. Do we need it? Why?





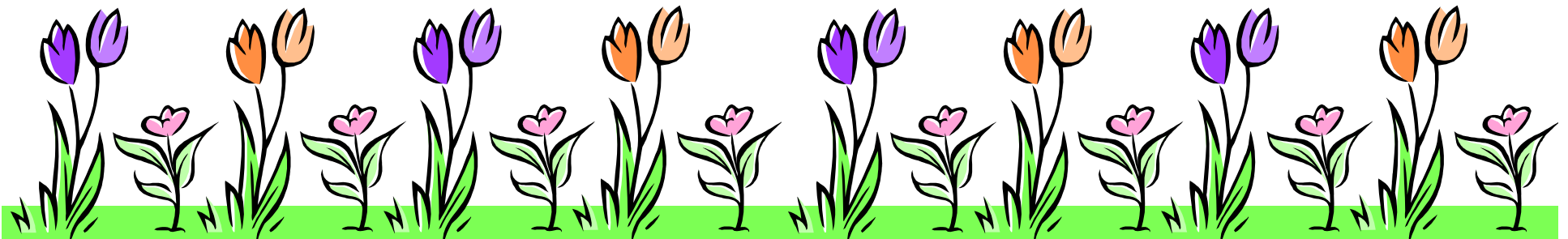
8. Research questions are documented in the form
of Statement which requires an examination.



9. How these statements or problem statements are generated?

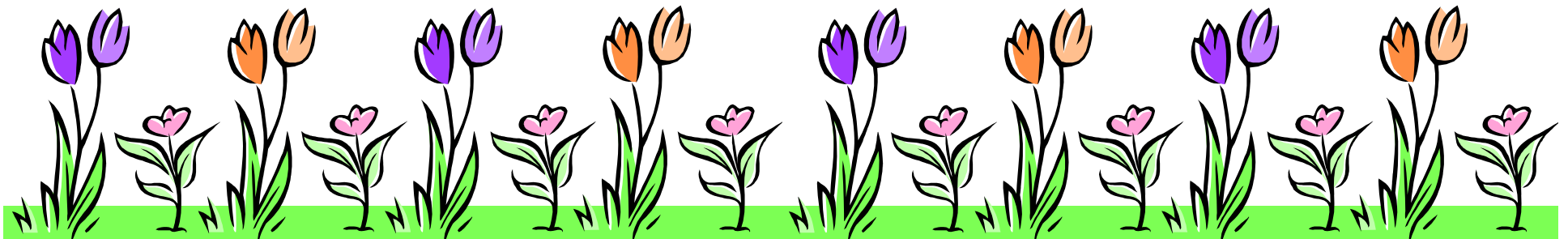


- Previous Statements.
- Triggered Interest.
- Potential Problem Fields.
- Existing / being Experienced.
- Intrapersonal / Outward.





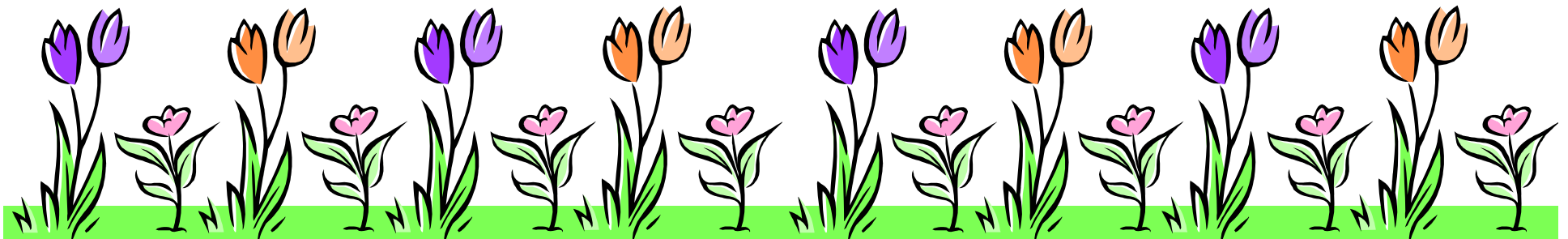
10. Search, Explore and gather evidence(s).





11. A Hypothesis is an:

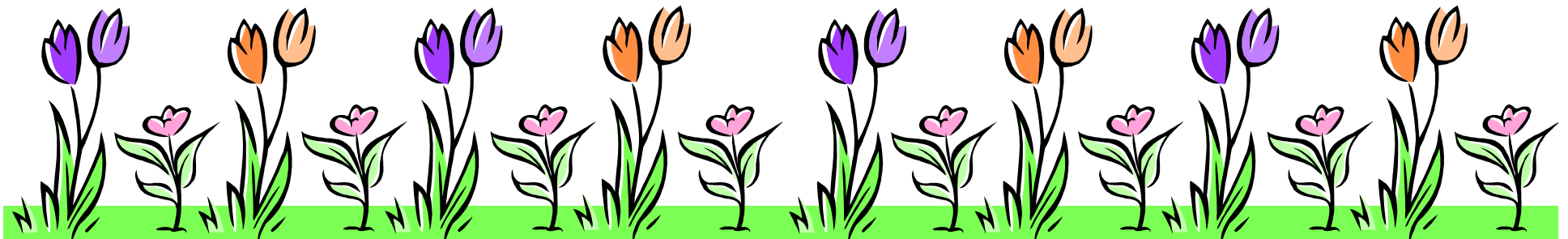
- Educated guess / hunch.
- Conjecture.
- Formal statement on expected relationship.
- Form of relationship between a set of independent variables & a dependent variable





12. and a dependent variable:

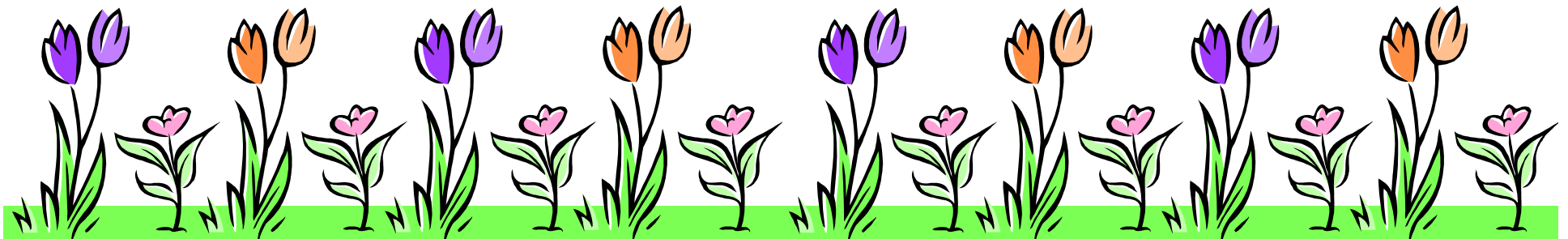
- Between predictors and predictand.
- Between regressor and regressand.
- A research question is essentially hypothesis.



13. - A tentative prediction on the nature of relationship.



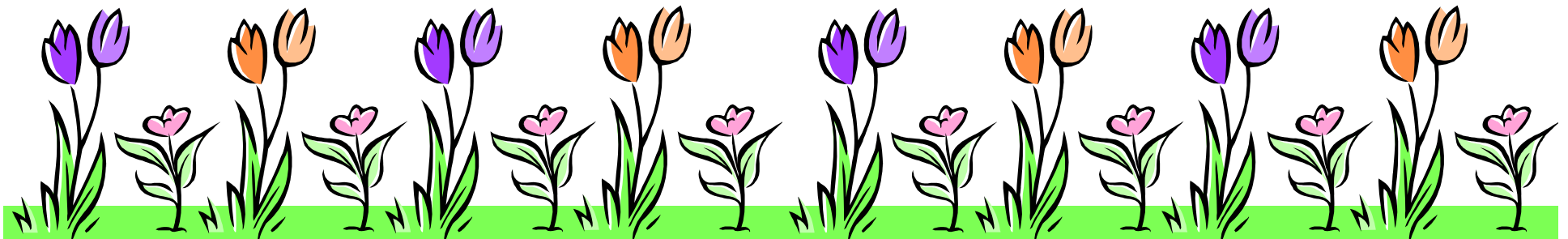
- A tentative explosion of a research problem.
- A declarative sentence.
- A statement or explanation suggested by explanation not proved or yet to be proved.



14. Nature of Hypothesis:



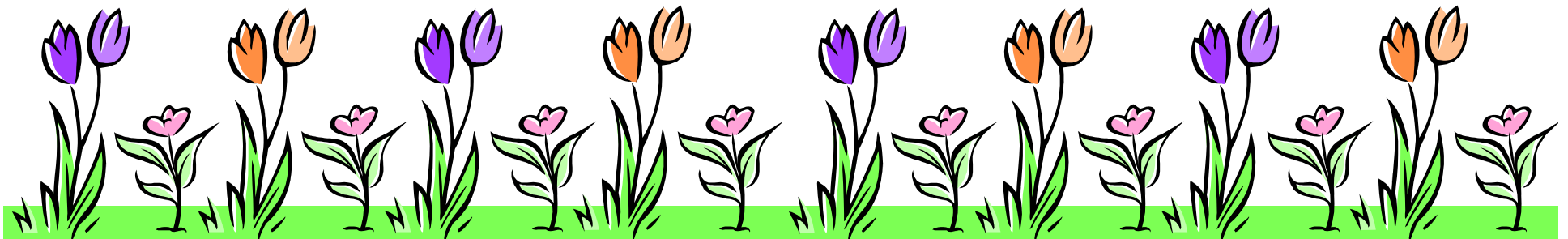
- A clear statement veracity of which to be tasted.
- It helps draw research objectives.
- It helps to identify key abstract concepts involved in research.
- Links up between problem statement and literature review.
- A tool for advancement of knowledge.
- Consistent with existing knowledge.
- Facilitates further enquiry.





15. – It can be tested.

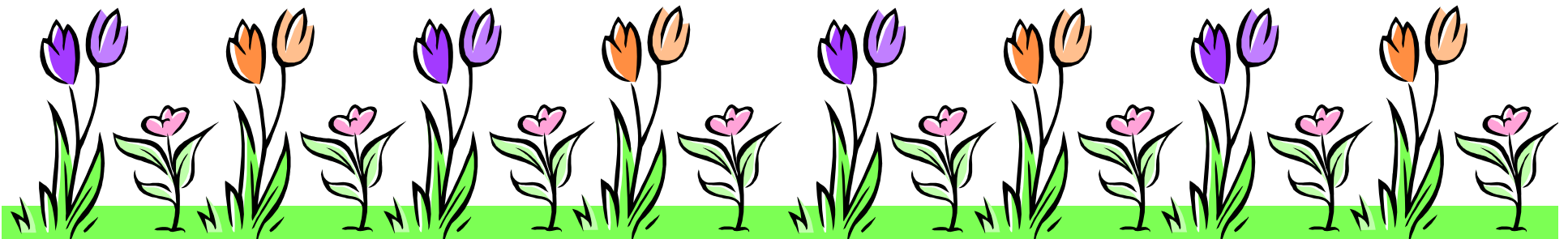
- Not moral or ethical questions.
- Neither too specific nor too general.
- Helps predict consequences or implications.
- Valuable when either proved or not proved.





16. Type of Hypothesis.

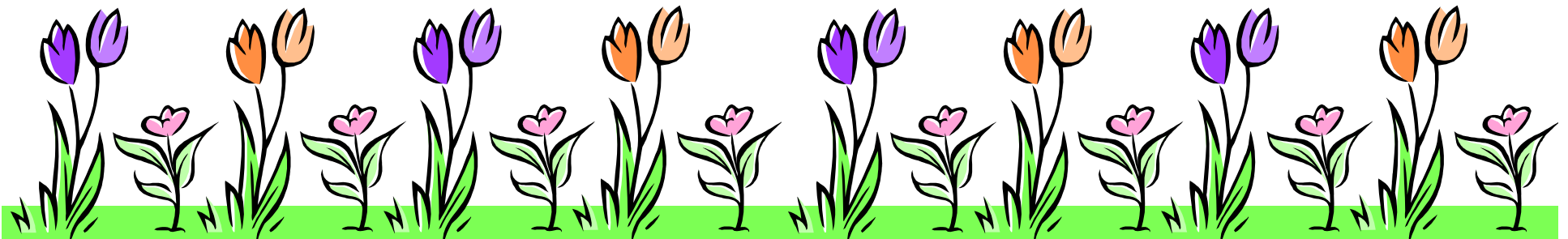
- Null.
- Alternate.
- Alternatives.





17. Formulation of Hypothesis:

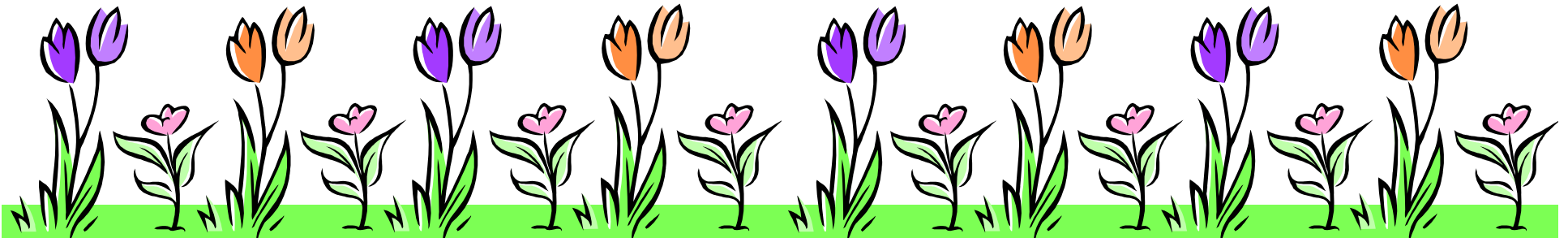
- Qualitative
- Quantitative





18. Generated by

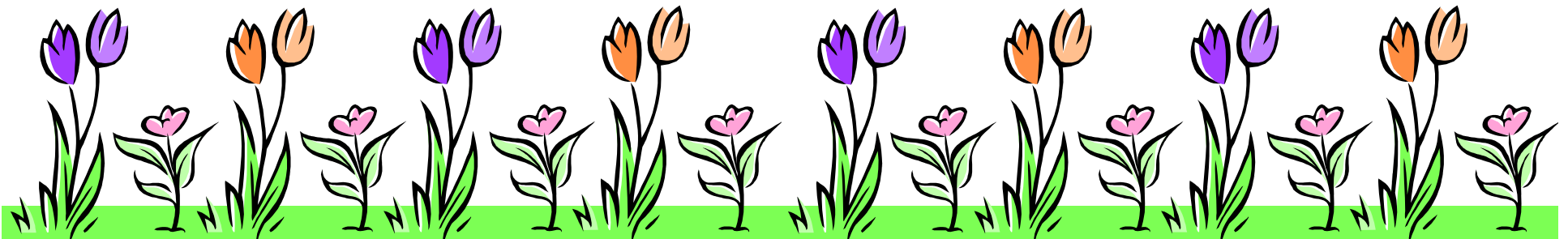
- Deduction / Deductive reasoning.
- Induction / Inductive reasoning.





19. Deduction Process

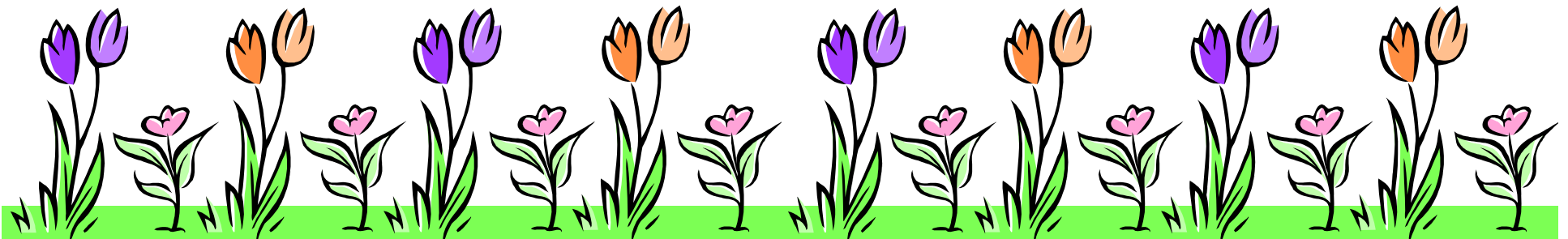
- Observation \rightarrow Pattern \rightarrow Tentative Hypothesis
 \rightarrow Theory \rightarrow Description / Quantitative.





20. Induction Process

- Theory \rightarrow Hypothesis \rightarrow Observation \rightarrow Confirmation \rightarrow Description / Quantitative.
- Induction / Inductive reasoning.

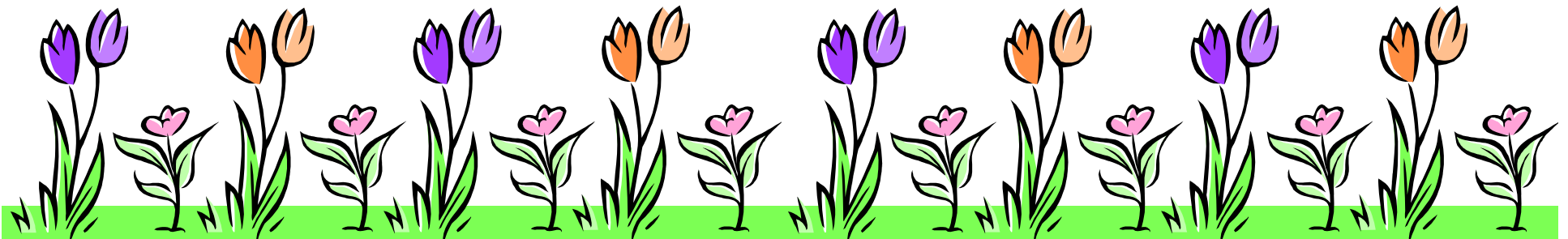


-

22. - Understand the phenomenon to be researched.



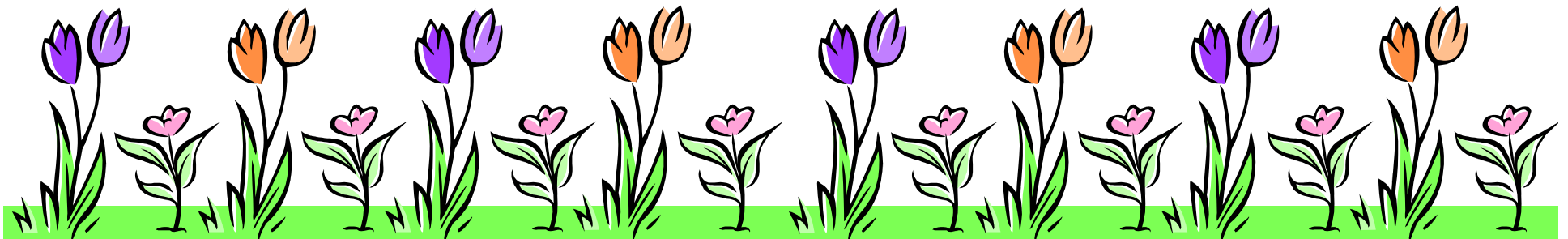
- Object of research is professional.
- Examine the phenomenon from an holistic perspective.
- Collect or gather relevant information.



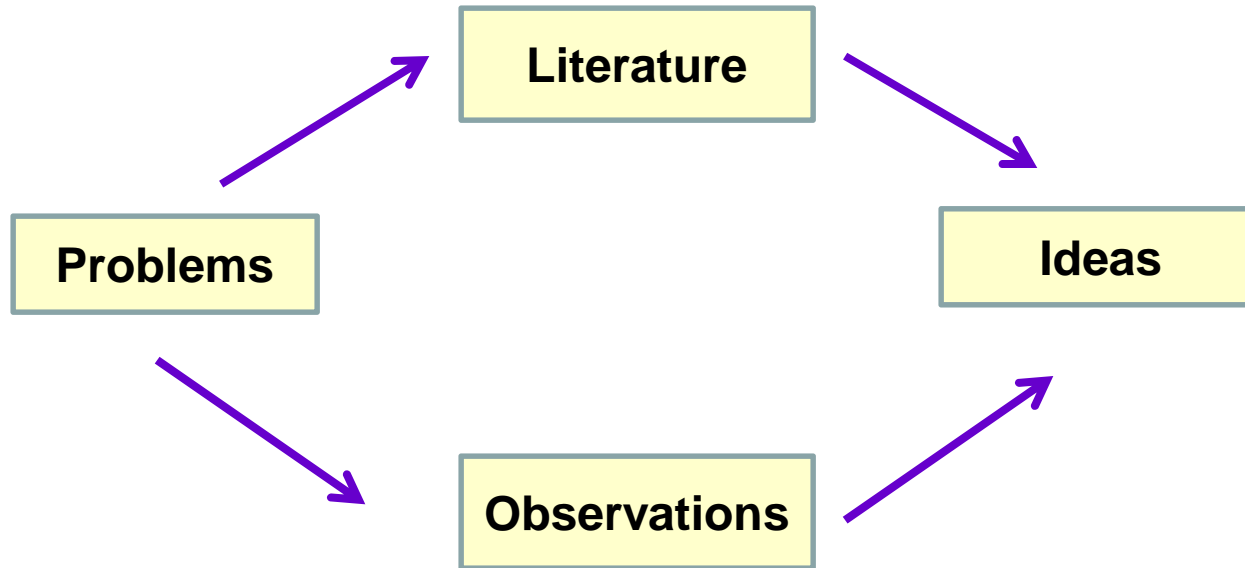


23. Quantitative Approach

- Comparison between variables.
- Relationship between variables.
- Testable proposition.
- Measurement problems to be attended to
- Do not combine questions, objectives and hypotheses.
- Define the target group.

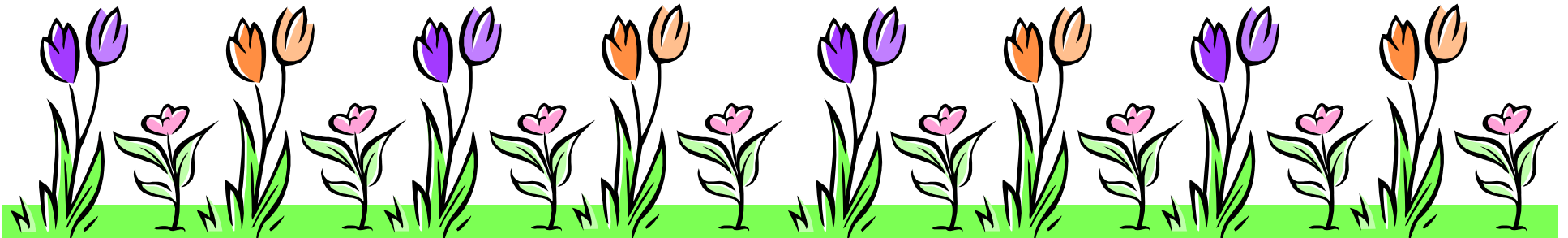


24. Generation Process:



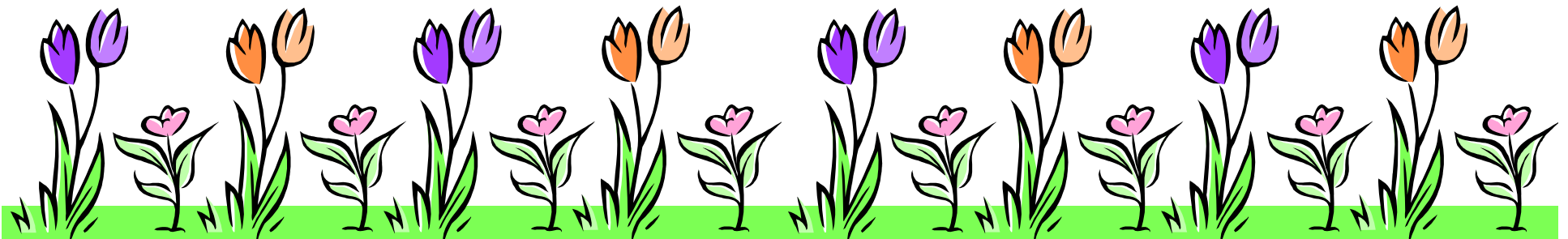
→ Operation Definitions →

→ Construct → Hypothesis



25. Testing -

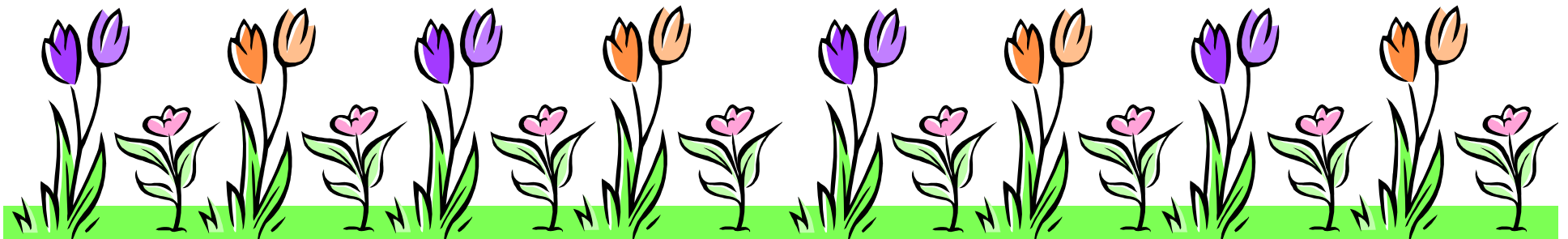
- To verify
- & to justify
- To refuse
- To validate
- To rectify
- To repeat
- To falsify



26. Errors in Hypothesis



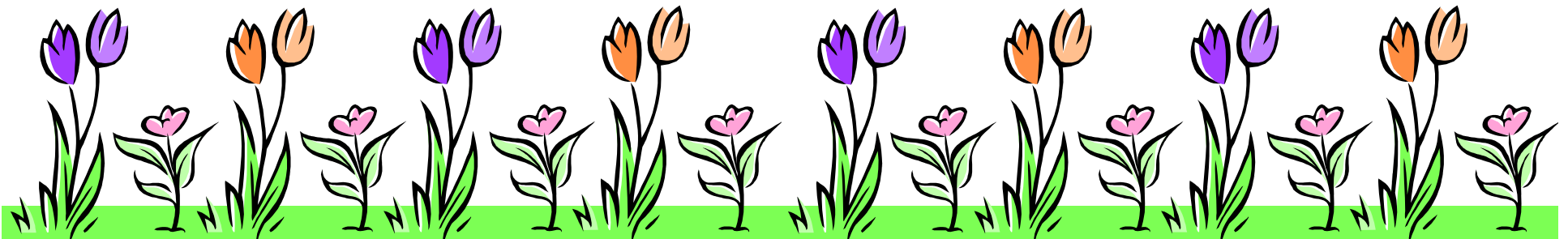
	Reality		
		Yes	No
Nature	Yes	O.K	I Error
	No	II Error	O.K





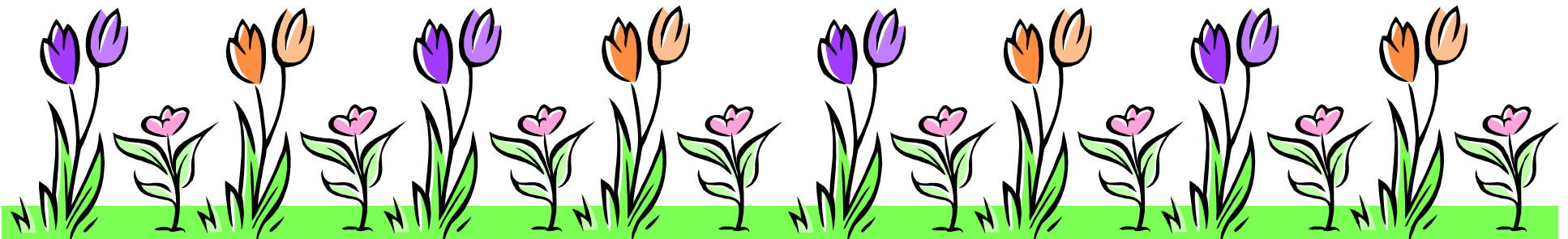
27. Awareness about seriousness of type I and
II errors.

Minimize I and II.





28. Error free testing can be attempted by
fixing type I or type II errors.





Thank You!

